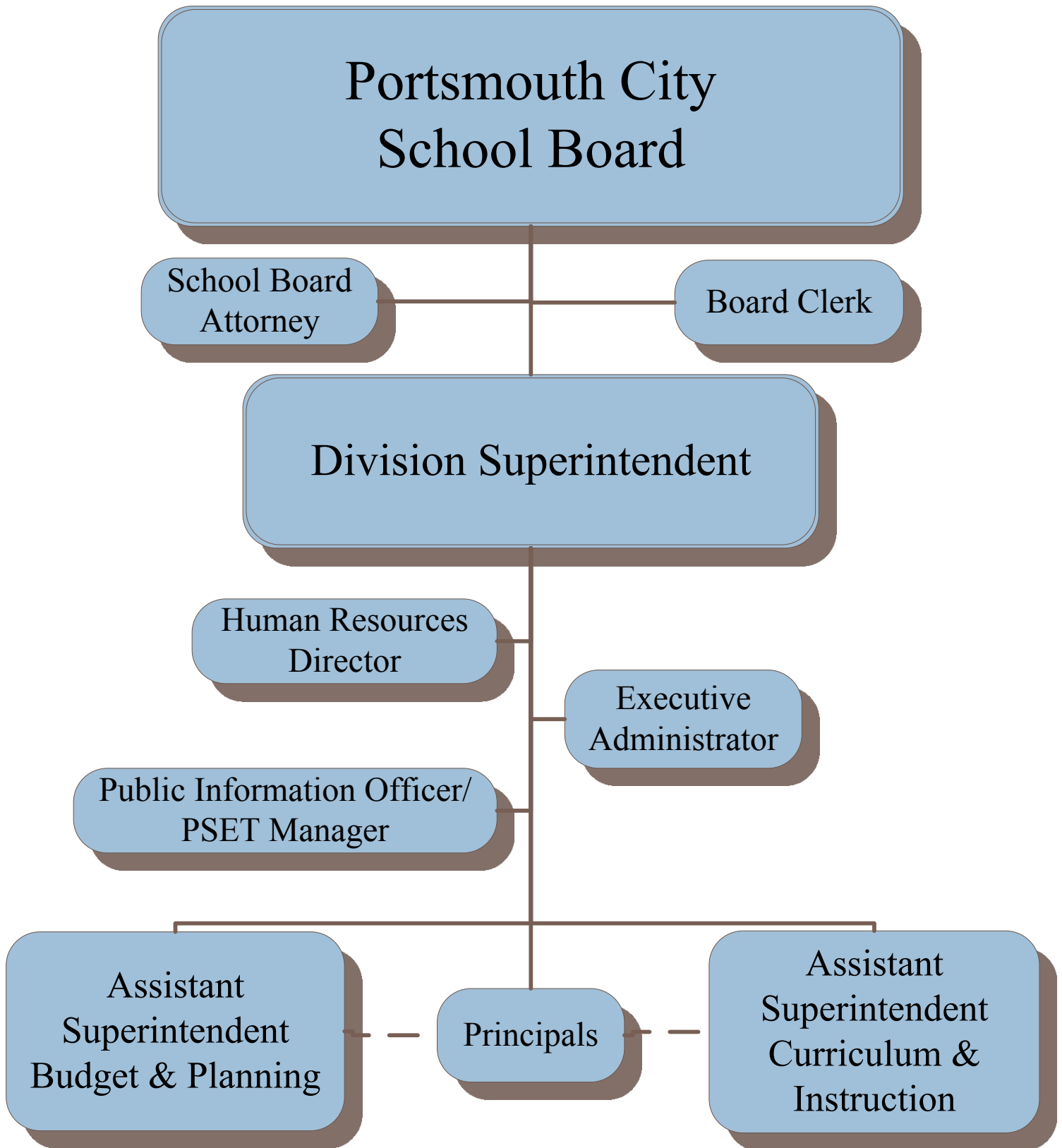
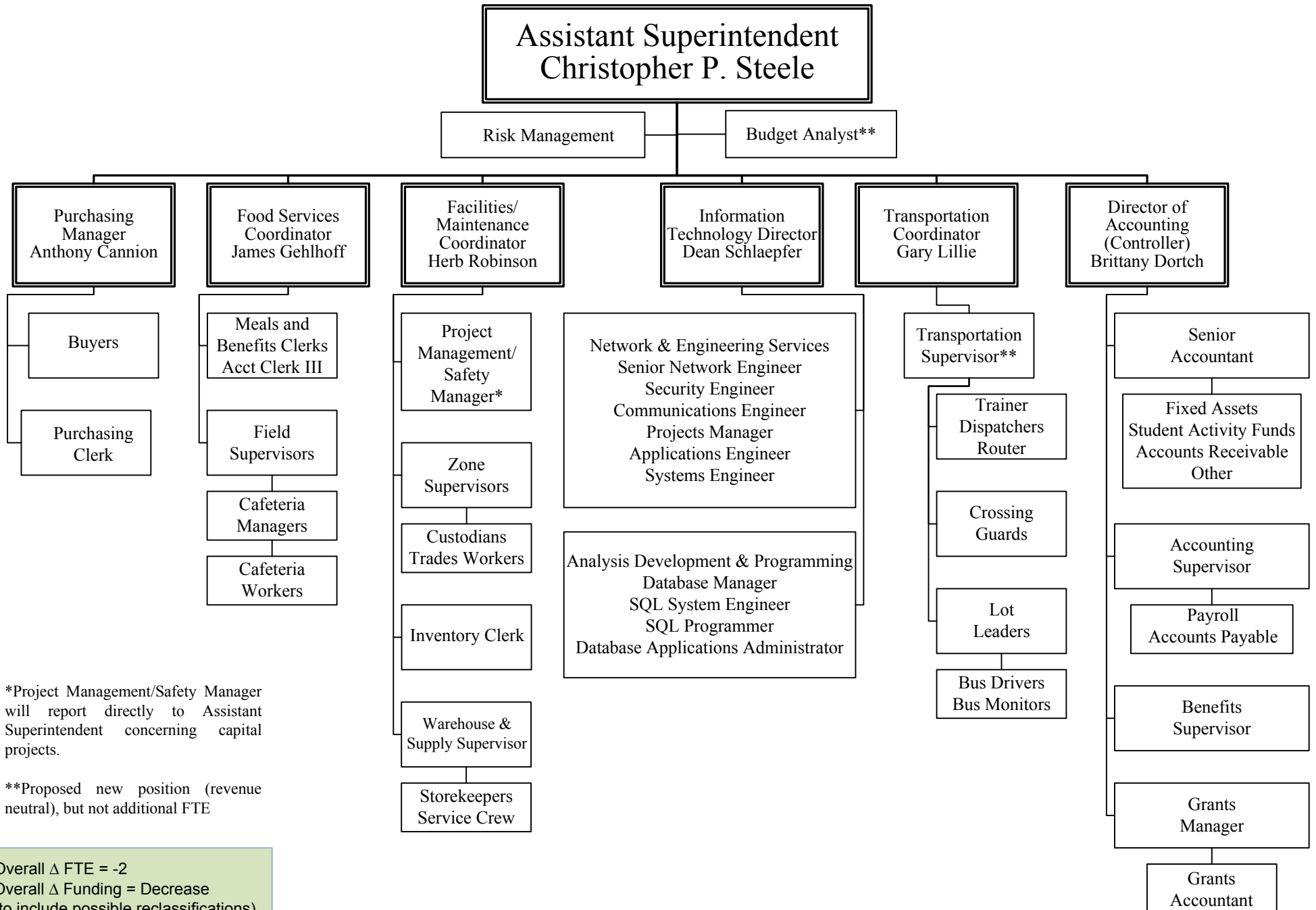


Division Organizational Chart 2015-16



OFFICE OF BUDGET & PLANNING

Organization Chart 2015-16



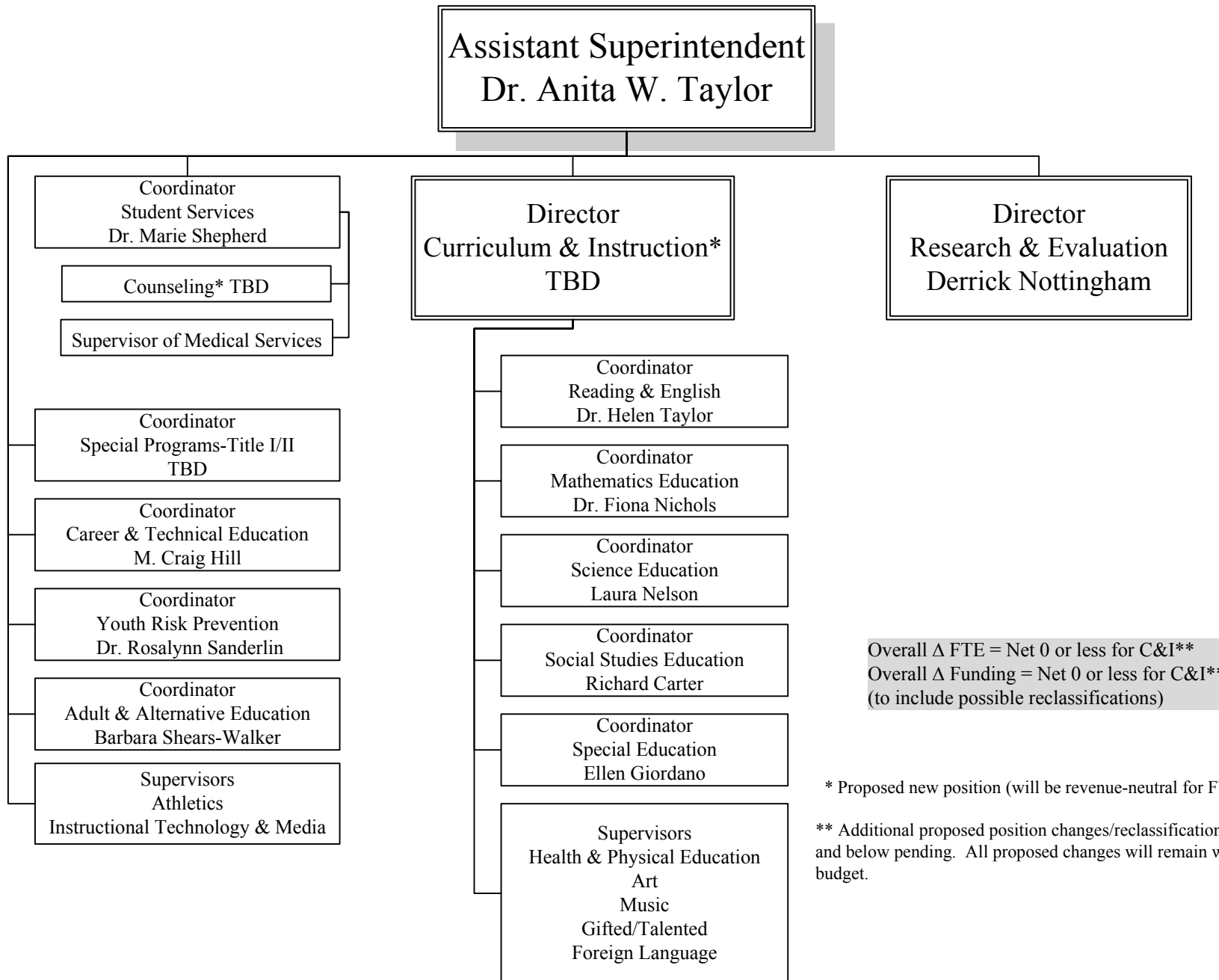
*Project Management/Safety Manager will report directly to Assistant Superintendent concerning capital projects.

**Proposed new position (revenue neutral), but not additional FTE

Overall Δ FTE = -2
 Overall Δ Funding = Decrease
 (to include possible reclassifications)

OFFICE OF CURRICULUM & INSTRUCTION

Organization Chart 2015-16



Overall Δ FTE = Net 0 or less for C&I**
 Overall Δ Funding = Net 0 or less for C&I**
 (to include possible reclassifications)

* Proposed new position (will be revenue-neutral for FY16).

** Additional proposed position changes/reclassifications at this level and below pending. All proposed changes will remain within approved budget.